



Scafftag®

Clearly better for business

A Guide to the Scafftag® Scaffold System

1 Scaffold Under Construction

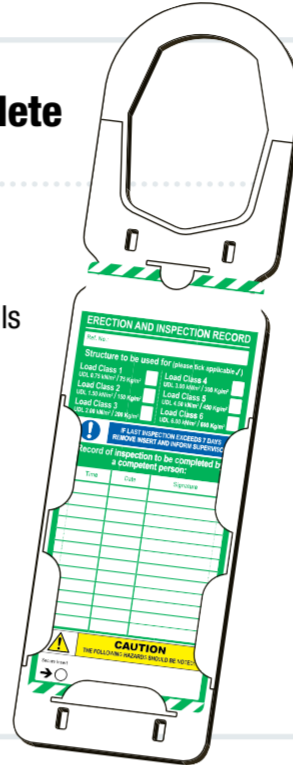
Scafftag® holders must be attached to all authorised approved access points to the scaffold.

When the scaffold is incomplete the Scafftag® holder will show the script "DO NOT USE SCAFFOLD".



2 Scaffold Construction Complete

When construction is complete fill in the top of the insert headed "ERECTION & INSPECTION RECORD" and complete details on the rear (yellow header with warning symbol) relating to supervisors and inspectors as appropriate.



3 Scaffold Statutory Inspection

Inspections must be carried out, at regular intervals not exceeding 7 days, after substantial alterations, or after any event likely to have affected its strength or stability. On satisfactory inspection the inspector will sign, date and time the section headed "COMPETENT PERSON".

If the scaffold is found to be unsafe at any time, remove the insert exposing the "DO NOT USE SCAFFOLD" and inform the scaffold inspector.



As the manufacturer, Scafftag recommend that in operation it is the responsibility of the scaffold user to ensure the equipment is showing "Fit For Use" and within the inspection dates. Any scaffold found to have Scafftag in place, overdue inspection or in the prohibition state, must be reported for reverification.

Scaffold inspection systems available from www.scafftag.co.uk



Towertag®

Dedicated tower scaffold inspection tags

We offer a dedicated mobile and static tower tagging system, although the original Scafftag is suitable for tower scaffold inspections, it is not ideal.

Best practice requires the inspection of a tower scaffold each time it's erected, modified or relocated. Following the initial erection of a tower, it's possible to record several scaffold inspections and relocations with the Towertag. Tower scaffold inspections are recommended every 7 days regardless of whether it's modified or relocated. Static towers must be inspected at a period not exceeding 7 days.

The Towertag doesn't include optional safe working loads because a tower scaffold is only recommended for 'Very Light Duty Use Only' which is clearly stated on the front of the tag.



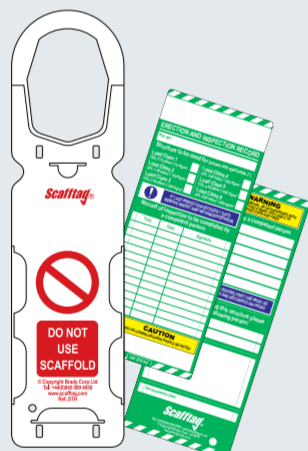
Inspection record



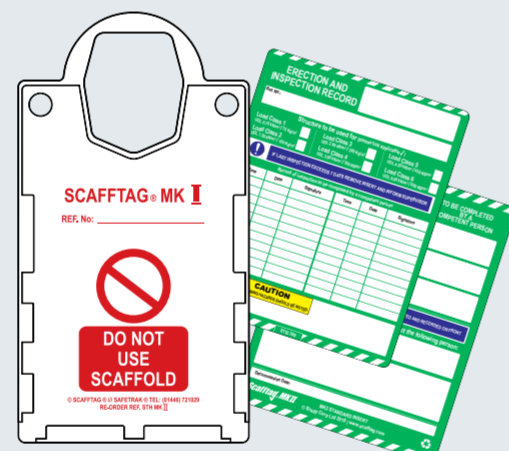
Tower relocation record



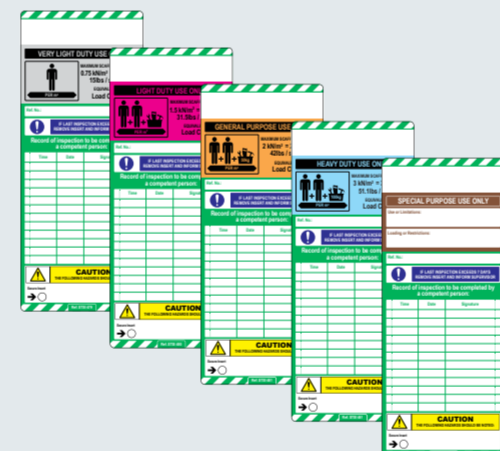
Safe working load



Scafftag® MK1



Scafftag® MK2



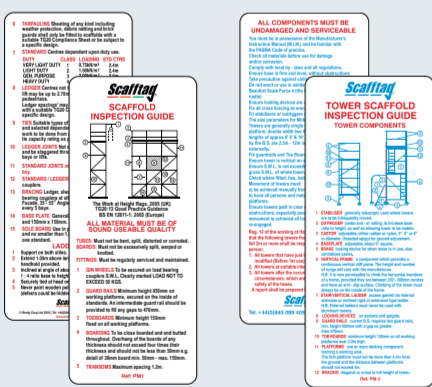
Scafftag® TG-20 inserts



Scafftag prohibition inserts



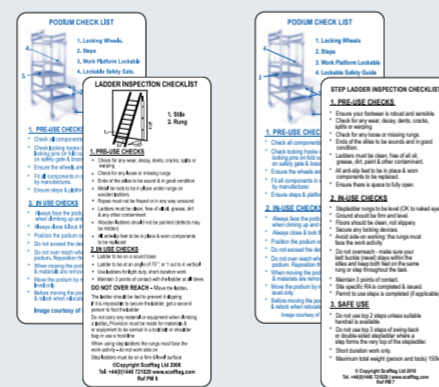
Structural tie test and warning tags



Scaffolding and tower pocket memos



Laddertag®



Ladder and podium pocket memos

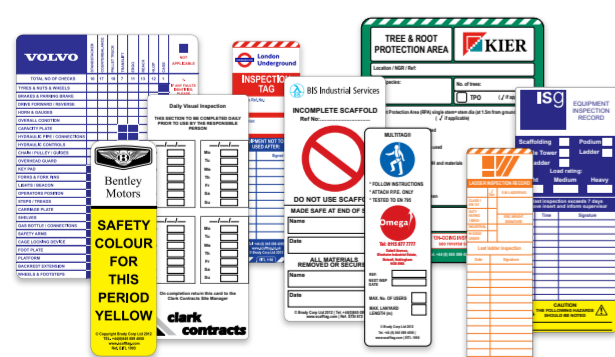


Nanotag™ for harness + split ring



The Blue book

CUSTOMISE YOUR TAGS



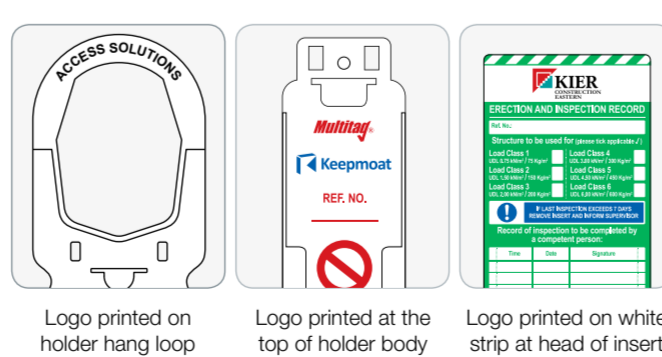
Our team of experts will work with you to your specific business requirements.

We are then able to:

- Adapt an existing system to incorporate your branding and unique business characteristics
- Provide a solution for the equipment/issues for which you require a system.

Whatever your issue, contact us for a no-obligation solution.

PERSONALISE YOUR TAGS



Logo printed on holder hang loop

Logo printed at the top of holder body

Logo printed on white strip at head of insert

The Scafftag® personalisation service allows you to add your company logo to our range of standard visual tags, while the design of the tagging system remains unchanged.

Add your logo to:

- Our standard inserts - most of our inserts are designed with a white band ready to accommodate your branding
- To the Holder - Typically printed at the top of the holders main body
- The upper curve of the holders hang loop (Not available on Laddertag, Nanotag, Multitag, Microtag, Unitag).

Visual Tagging Solutions

Safety. Maintenance. Identification.

Tel: 0845 089 40 60

Email: customer.services@scafftag.com

Web: www.scafftag.co.uk

www.bradyeurope.com

Scafftag A BRADY Company



Efficient equipment inspections, get the free construction guide

www.scafftag.co.uk/visual-tagging/construction